

# Community Focused Schools

## Part1

# **Community Focused Schools in Wales**

Sue Rivers

Deputy Chairperson  
General Teaching Council Wales

# Community Focused Schools in Wales

## The Learning Country

A Paving Document

A Comprehensive Education and Lifelong Learning Programme to 2010 in Wales

### Community Focused Schools

National Assembly for Wales  
Circular No: 34/2003  
Date of issue: 15 December 2003

Guidance Circular



School Governance and Management



Adran Hyfforddiant ac Addysg  
Department for Training and Education



Llywodraeth Cymru  
Welsh Assembly Government

### School Effectiveness Grant and Pupil Deprivation Grant 2012-2013



### School Effectiveness Grant and Pupil Deprivation Grant 2013-2015



www.cymru.gov.uk

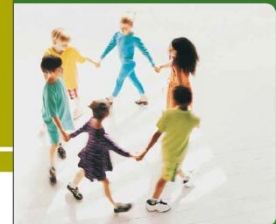


### Guidance

Guidance document no: 101/2013  
Date of issue: April 2013

### Tackling Child Poverty:

### Guidance and Regulations for Welsh Authorities



Llywodraeth Cymru  
Welsh Assembly Government  
Cymry Ifanc  
Young Wales

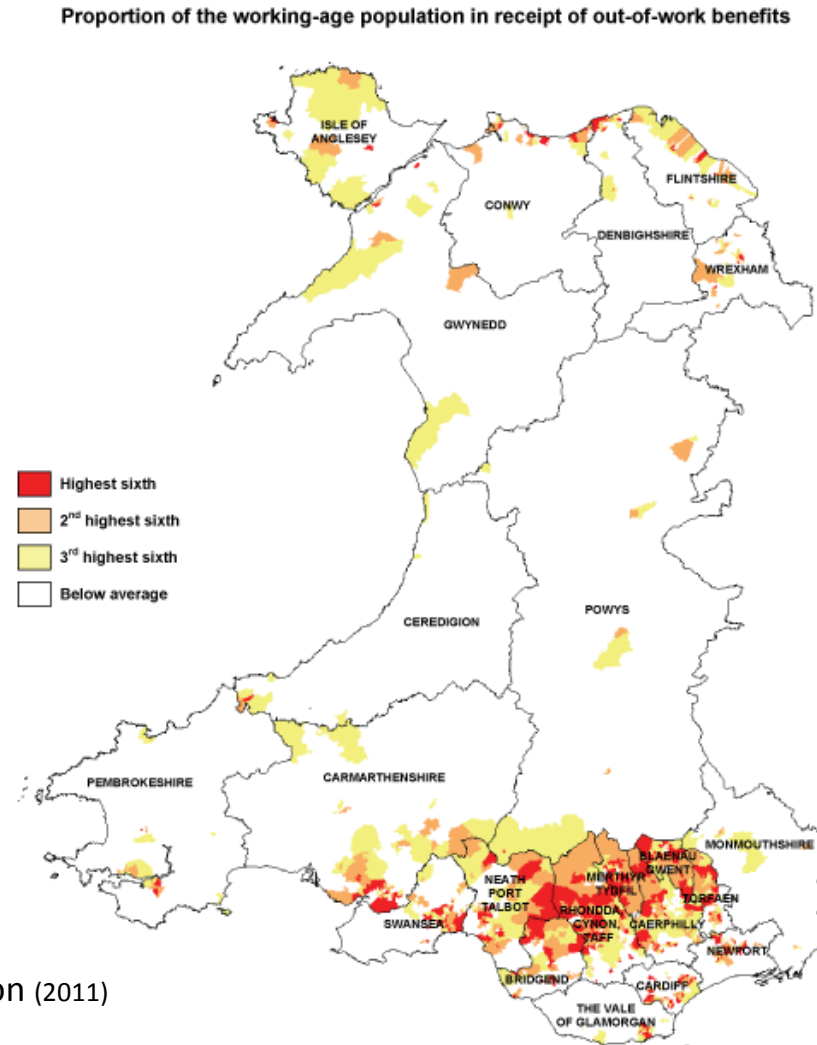
www.cymru.gov.uk

# Community Focused Schools in Wales

*'A community focused school is one that provides a range of services and activities often beyond the school day to help meet the needs of its pupils, their families and the wider community.'*

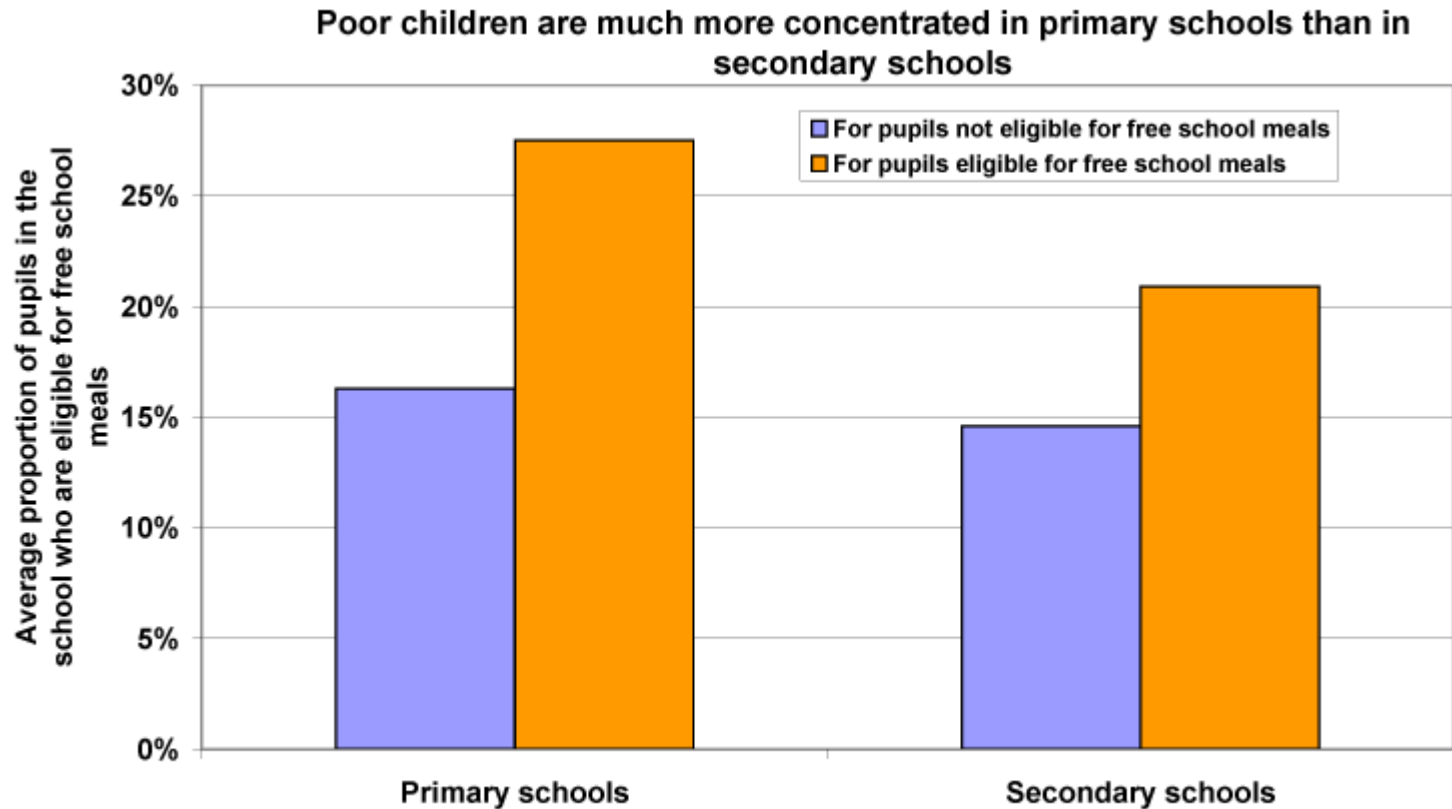
***(Community Focused Schools. Circular No. 34/2003,  
National Assembly for Wales)***

# Community Focused Schools in Wales



Population - 3.064 million (2011)

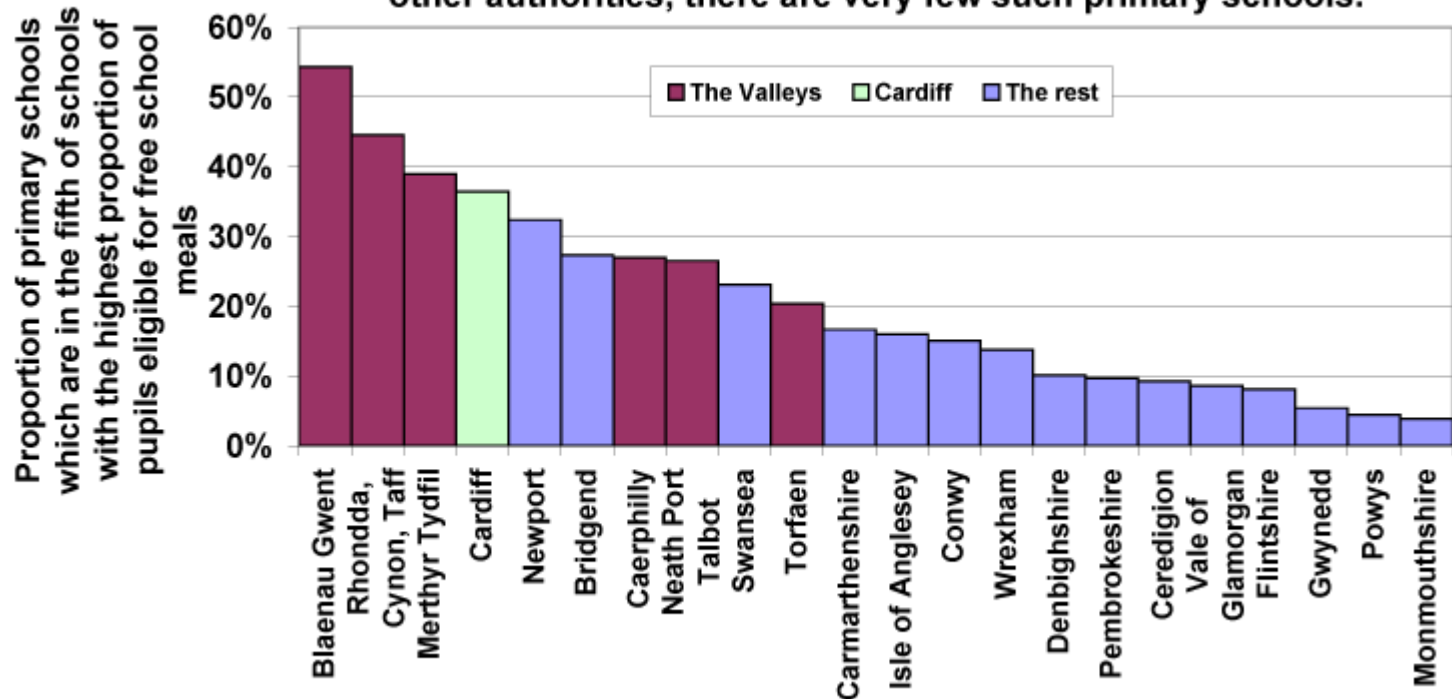
# Community Focused Schools in Wales



Source: School & Teacher Statistics, Welsh Assembly Government; the data is for 2010; updated Dec 2010

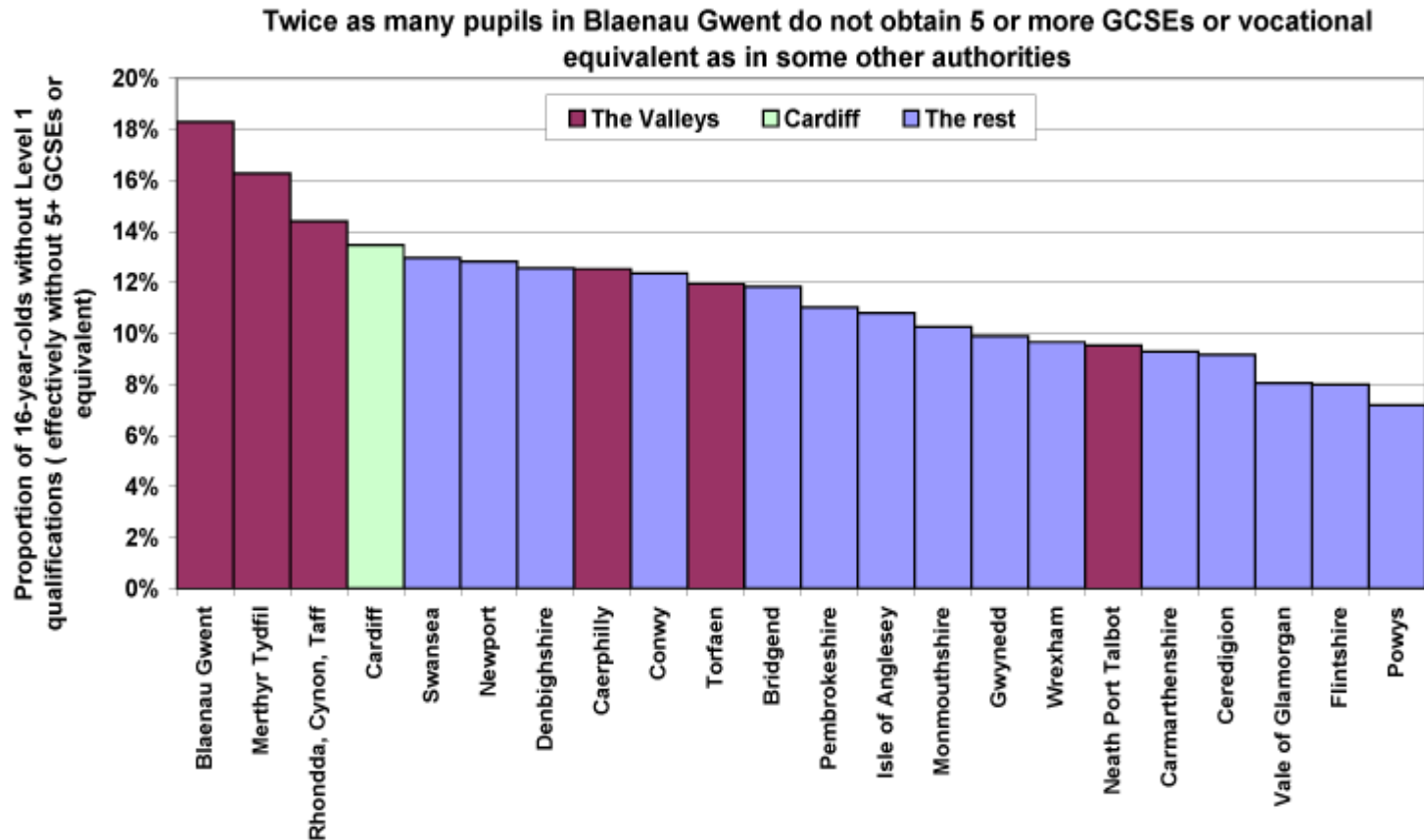
# Community Focused Schools in Wales

In some authorities, a third or more of the primary schools have a high proportion of their pupils eligible for free school meals. In other authorities, there are very few such primary schools.



Source: School & Teacher Statistics, Welsh Assembly Government; the data is the average for 2008 to 2010; updated Dec 2010

# Community Focused Schools in Wales



Source: Statistical Releases, National Assembly for Wales; the data is the average for 2007/08 to 2009/10; updated Jan 2011



# Community Focused Schools in Wales

*The benefits of community focused schools have been identified as follows:*

***For pupils and schools:***

- *higher levels of pupil achievement*
- *increased pupil motivation and self-esteem*
- *specialist support to meet pupils' wider needs*
- *additional facilities and equipment*
- *enhanced partnership working with the community*
- *enhanced status for learning in the local community*
- *reduced pupil disaffection*

# Community Focused Schools in Wales

*The benefits of community focused schools have been identified as follows:*

***For families:***

- *improvements in child behaviour and social skills*
- *greater availability of specialist support for families*
- *easier access to relevant services*
- *greater parental involvement in children's learning*
- *more opportunities for local adult education and family learning.*

# Community Focused Schools in Wales

*The benefits of community focused schools have been identified as follows:*

***For communities:***

- *better access to essential services*
- *improved local availability of sports, arts and other facilities*
- *local career development opportunities*
- *better supervision of children outside school hours*
- *promotes community cohesion by re-engaging adults (and in particular parents) in learning –  
reinforcing relationships between school and home*
- *helps regenerate and strengthen communities*
- *The National Institute of Adult Continuing Education (NIACE) states that  
**'Schools are the bedrock of a lifelong learning society'**.*

# Tonypandy Community College



# Tonypandy Community College

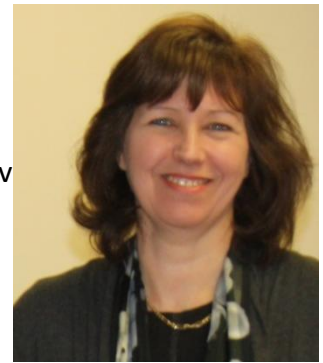
- 11-18 Comprehensive school
- Penygraig, Rhondda
- Serves 3 Community First Wards (additional two on our border)
- 950 students
- Open from 06.00 to 21.30 five nights a week and on Saturday morning
- o Lowest exclusion rate in RCT
- 198 pupils & increasing returning to study at post 16

## 2010 data/results

- - 26+% pupils eligible for Free School Meals
- - 5 A\*-C grades GCSE – 64%
- - Core Subject Indicator - 38% (English/Welsh, Mathematics & Science)

# Our Journey

Mrs Helen O'Sullivan



- Vision – 12 years.
- Commitment - Fully supported by LA, Governors, Leadership Team, staff, students and parents.
- Energy, enthusiasm, resilience.
- Prepared for/understand partnership working.
- Community ethos underpins all working practices, policies and procedures.
- Capacity.
- Resources.

Staff – Leadership Team/ Remodelling of staff/

Resources – /areas funding/equipment/space/areas.

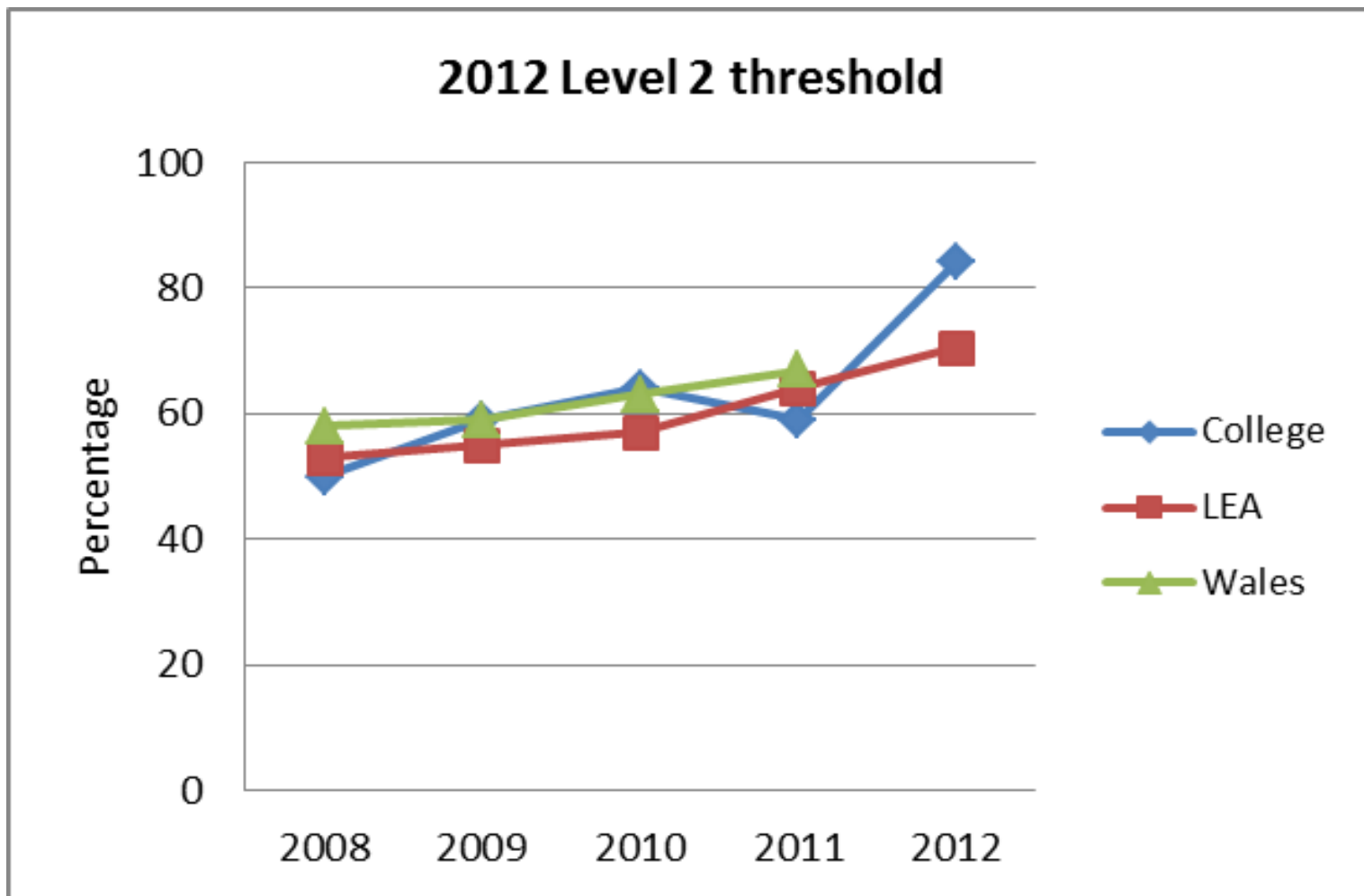
- Additional responsibilities and workload.

# Tonypandy Community College

## Why Community Focused School?

- Enriches, enhances the curriculum.
- It promotes positive attitudes to learning and education.
- It places the school at the centre of the community
- It impacts on standards. (CSI 13% - 64%)
- It improves the profile of the school and improves the use of resources.
- It makes the job easier.

# Tonypandy Community College





# Tonypandy Community College

**Our priority is to impact on standards and learning**

Heritage Project - Roots to Restoration, Cambrian Coal and Community  
Enrichment opportunities - Zulu – creative writing project/subject support.  
Bespoke pieces of project work from Heritage to Crime Prevention

## **“The Friends”**

In essence a Parent Teachers Association (PTA), a group of supporters working for the school on a voluntary basis.

- Parents Forums e.g. transition, exam skills and areas of parental interest/ consultation.
- Fund Raising
- Access grants/additional funding
- Provide support- parents’ Evenings/ Open Evenings etc.

**e3+** provision “extend enrich and excite” a very successful after school provision funded by RCT.

Media studies, animation, photography, cookery, as well as elite sports club football Rugby, horse riding, creative writing. We had 1989 place available last month with a 65% uptake.

Cluster based holiday provision

International Link schools in Welfen-Gymnasium Ravensburg Germany.  
Busui CentralCollege, Mbale Uganda.

### Adult Classes

Evening class provision, Family Learning  
~ Promotion e.g. advertisement & distribution.  
~ Development new Classes e.g. dancing  
~ Link Person for outside agencies.

### Skills Centre

~ Funding  
~ Beneficiaries  
~ Ongoing Development  
~ Hire of Premise  
~ Managing Grant

### Community Action group

~ Fund Raising, National & Local Charities, trusts and grants.  
~ Visiting Speakers e.g. Police, Fire Service, Neighbourhood Watch, Ambulance, Environmental Agencies, Forestry Commission, Keep Wales Tidy. Charities  
~ Duke of Edinburgh, Key stage 4 ^& 6th Form Community Service  
~ Tea dancers—Intergenerational  
Curriculum based projects

### Premises Hire

### Intervention strategies

~ Manager & Convergence staff in school  
~ Admin support  
~ Forward Plans, Future development e.g. parenting groups.  
~ Family Learning Events, external agencies

**Awards** ~national & local

### Funding

~ CCW Grant  
~ WCVA  
~ Judges Hall Trust  
~ Communities First  
~ Lottery funding  
~ RCT- OSL  
~ Small Charities  
~ Trust funds

### Charity fundraising

Group in school

### Canopi

Cluster based approach to Service for Young people  
Chair Youth Group



e3+

### Eco techs

Eco & Healthy Schools  
Environmental Group  
Re-cycling school based scheme, including close links with local groups

### International Links

China, Uganda, Germany  
Connecting Classrooms

### Marketing

College  
~ Tonypany Times  
~ Parents Respond  
~ Community First newsletters,  
~ Local and national newspapers  
~ Brochures  
~ Web site

### Friends of Tonypany

Secretary Work. Assistance throughout college  
Tea Dance, Drama Evenings.  
Fund Raising. Access Funds  
Parents Evening, social events

**Link person** for outside agencies for projects and multi agency working.  
E.G Bernie South Wales Fire Service

**South Wales Police**  
Community PACT

### ~Communities First Partnership – Mid Rhondda Cluster

Partnership meetings.  
~ Health, Prosperous Communities and Learning groups  
And associated projects linking to the three themes.

### Intergenerational

#### Group

Committee  
Events  
Access funding

Future Developments of Pupil Deprivation Grant from WG  
To include transition, family learning and mentoring projects

### Voluntary organisational projects.

Ark Youth & Community,  
Valleys Kids. Clydach development trust,  
Cambrain Football



# **Community Manager**

# Community Manager



S01 salary

Post – Community Manager/marketing.

Evolving role.

Member of College Leadership Group – CLG.

(Headteacher, Learning Manager, Community Manager, Asset Manager, Office Manager and Network Manager.)

## **Julie - Profile**

- Live locally with a good understanding of the community and its needs.
- Background in Police work, family, lead a team of learning support assistants, before moving to current role, 1 day/2 days/3 days before becoming full time.
- Role funded by e3+ 25%/25% bids/additional funds/College.
- Passionate and enthusiastic about role
- People person
- Ability to work effectively with young people and their families.
- Excellent skills- communication/interpersonal and very resilient
- Valued member of staff.

# Impact

## Our priority is to impact on standards and learning

Heritage Project - Roots to Restoration, Cambrian Coal and Community

Enrichment opportunities - Zulu – creative writing project/subject support.

Enrichment opportunities

Volunteering opportunities

Support of the Welsh Bacallaureate Qualification

- **“The Friends”**
  - Parents Forums e.g. transition, exam skills and areas of parental interest/ consultation.
  - Fund Raising
  - Access grants/additional funding
  - Provide support- parents’ Evenings/ Open Evenings etc.
- **e3+** provision “extend enrich and excite” a very successful after school provision funded by RCT. Highest attendance in RCT

Media studies, animation, photography, cookery, as well as elite sports club football Rugby, horse riding, creative writing. We had 1989 place available last month with a 65% uptake.

- Cluster based holiday provision
- Collaborative third sector partnership programme.

# Community Information

## Adult Provision –2013

- Relaxing with Flowers - Flower arranging
- Strengthening Family Programme
- Community Library
- Essential Skills Programme
- Alternative Therapies
- Sign Language
- Photoshop
- Sewing Group
- Zumba – fitness
- Skills Centre offering:
  - Plumbing
  - Carpentry

# Additional funding in the last 2 years

- Local Authority - e3+ funding £150,000.00 /€176,491
- 5x60 officer post £500.00 activity budget (€588)
- International links with British Council £7,000.00 /€8,236
- Additional funding £180,000.00 / € 211,789
- Country Side Wales Grant £20,000.00 (only school in Wales supported to develop outdoor space). (€23,532)
- Special projects BERNIE, Zoom. Activities worth in excess of £40,000.00 / € 47,064
- Range of additional small pots of funding.

# Awards Received over the last 18 months

- Heritage School Awards – 5<sup>th</sup> yr running taking top prize on two occasions.  
(£1,500.00/ €1,764)
- Community Champion Award winners November 2008/2009 represented Wales in London in 2008
- Youth Awards 2008/9/10
- Zoom Awards
- Media4 Schools Awards winners
- E.B.P
- Silver Eco School and Phase Three Healthy Schools
- Chair of Friends Shortlist South Wales Echo Community Champion 2010
- International Schools Award.



# Children's Commissioner

Keith Towler  
December 2009



*“Every member of staff I spoke to outlined how they felt that working in partnership, extending the reach of the school into the community they serve and placing the needs of their students at the top of their work was making a real difference to the lives of children and young people.”*

*“All the things that I would want to see and which every young person going to school should have as a matter of right. In fact, everything about Tonypany Community College says: ‘we respect children and young people’. Great to see.”*

*“Inclusion, working in partnership, the involvement of families and provision directed by the active participation of children and young people are words we hear a lot. It is not everyday you see it happening in practice. What a great place.”*

**“Wow, what a place.”**